

- 4 Printing and displays
- 10 Barrier-free innovation
- 14 Shelves for Zurich University
- 16 Signs for Klagenfurt University Hospital

FORSTER **FF**

aktuell

The magazine for staff and business partners of the Forster Group



A23: complete renewal
St. Marx elevated road ... pp. 6-7



Towards the end of the year, we all take a moment or two to retreat from the hectic pace of life and review the events of the past twelve months and what we have achieved together. At Forster we, too, are looking back – at novelties, exciting plans and projects which we have jointly completed or just begun. And we want to take this opportunity to thank all members of our staff for their excellent teamwork and achievements, as well as our customers for their steady trust and cooperation and long years of partnership with us.

And because it is an issue dear to our hearts: same as in the past years we once again make a Christmas donation to a charitable project.

We hope that all our readers will enjoy serene and peaceful hours with their families, restful holidays and – naturally – happiness, success and good health for the new year!

Christian Forster

Robert Reichartzeder

Hans-Peter Prüller

Andreas Grader

OVERVIEW

GOOD NEWS

News from and about Forster 3

ADVERTISING SYSTEMS

Practical serving tool 4
Counter display for smart-home products 4
Advertising signs for tourist regions 5

TRAFFIC ENGINEERING

Complete renewal of St. Marx elevated road 6–7
New traffic signs: 33rd amendment to the Highway Code 8

Lorry routing system for Egger 9
New overhead signs 9

PRODUCTION

Tactile signs by digital printing 10–11

NOISE BARRIERS

HSL Zuid: large-scale project in the Netherlands 12–13
A rock shed at Landeck castle 13

SHELVING SYSTEMS

New central depot for Zurich University 14–15

SIGNAGE SYSTEMS

Modern and clear signs for the university hospital 16–17
Signs for local supplier LENZ 17

INSIDE NEWS

Staff news 18–19

Sustainability Report 2021



Climate change is one of the urgent challenges of our times – and for us as the Forster Group it is crucial to operate as sustainably as possible. Our latest Sustainability Report provides an overview of all our activities with regard to social responsibility, duly considering the ten principles of the UN Global Compact, the core subjects of ONR 192500 (ISO 26000)

and the 17 UN Sustainable Development Goals (SDGs). As reported, we once again confirm our commitment concerning human rights, labour practices, environmental protection and combatting corruption.

Download our Sustainability Report by clicking: www.forster.at/en/sustainability

Career from an apprenticeship

Apprenticeships at Forster were the centre of attention at the autumnal career events Karriere Clubbing and Bildungsmeile. Pupils had an opportunity to learn about apprenticeships and benefits offered by Forster. Particularly exciting were the insights and accounts given by our current apprentices and staff members – all of them had started their career with an apprenticeship at our company.

For more information on apprenticeships see:

www.forster.at/en/apprenticeship



The Karriere Clubbing event held at Schloss Rothschild of Waidhofen/Ybbs stirred up considerable interest for the apprenticeships at Forster.



Trade show review:

InnoTrans

Forster noise barriers at the leading international trade fair for transport technology

Sustainable mobility is the number one issue governing the industry – as witnessed by the InnoTrans of 2022. On 20–23 September 2022, all the key producers and players met at the leading international trade fair for transport technology and mobility in Berlin. Forster was attending, showing innovations of its noise control segment, such as FONOCON Silent View, Noise Breaker and the BIM tool for FONOCON noise screening products to provide digital planning support for noise barriers.

Trade show preview:

Visit us at one or more of the following trade shows next year:

Munich Traffic Noise Protection Days – current technologies and their performance in noise control along traffic routes

Date: 9–10 March 2023

Place: Munich University of Applied Sciences
mvl.tu-muenchen.de/muenchner-verkehrslaermschutztage

Marke[ding] Vienna – the trade fair for haptic advertising and visual communication

Focus on advertising engineering

Date: 18 April 2023

Place: Hofburg Vienna
markeding.at

ASTRAD – trade fair for community requirements and technical infrastructure

Focus on traffic engineering

Date: 14–15 June 2023

Place: Messe Wels

astrad-austrokommunal.at

Kommunalmesse – trade fair for community requirements

Focus on traffic engineering

Date: 21–22 June 2023

Place: Messe Innsbruck

diekommunalmesse.at

Imprint:

Owner and publisher:
Forster Verkehrs- und
Werbetechnik GmbH.

..... Editors:

Heinz Lumetsberger,
Silvia Mairhofer,
Daniel Obermüller,
Fritz Haselsteiner.

..... Photos:

Forster archives,
©Resch&Frisch (p. 4),
©Bea-fon Mobile
GmbH (p. 4),
©Dominik Ketz (p. 5),
©Photography Stefanie
Dornik (p. 11),
©ProRail (pp. 12–13),
©Sebastian Heeb
(pp. 14–15).

..... Printed by:

Gugler GmbH

..... Translation:

Gertrude Maurer



Flexible in use – inner slide-in holders make it easy to exchange product information.



BEA-FON MOBILE

Counter display for smart-home products

For more than a decade, Bea-fon has been among the leading manufacturers of mobile phones, characterised by their simple user interface combined with smart SOS emergency call applications. Accordingly, the requirements to be met by the new counter display to be used in bricks and mortar shops were stringent.

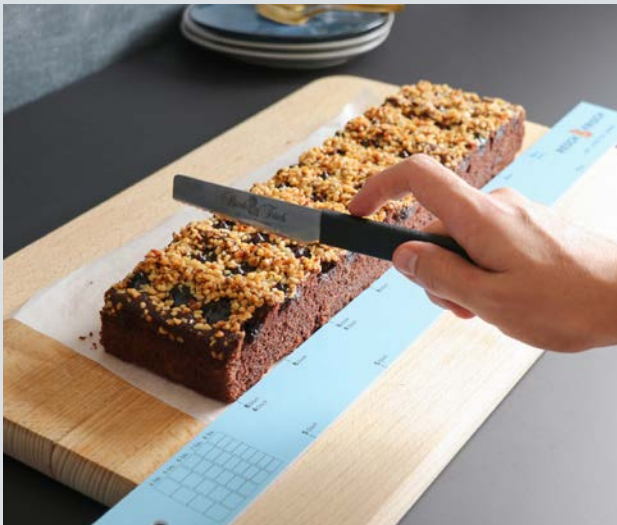
Top quality, stable and flexible to use: the new counter display for smart-home products meets all the criteria for a modern display. The sheer amount of know-how and input that goes into a product is demonstrated by the many work steps involved – the printing to be put on the 3 mm acrylic glass, the profile cutting, the polishing of the edges and the thermal bending


necessary until the piece can be assembled. Braces inside provide the stability required for a display of one metre in length. Well thought-through details such as anti-slide nubs and inner slide-in holders for paper inserts make the bea-fon counter display perfect.

Full service counter display The know-how accumulated by our staff was tapped already when planning the display, because both the design and its implementation were contributed by Forster. The prototype procedure produced the final details before the batch of 300 was readied for serial production. Moreover, the full service package provided by Forster's point-of-sale specialists included the installation manual for the counter display. 

RESCH&FRISCH

Practical serving tool



How delicious this looks! A pity that the cake was not photographed in the course of a break taken by the editing team, but that it belongs to a recently implemented project: the Resch&Frisch cake spacer, a practical tool to help cut servings. The cake spacer simplifies the handling of cakes (a must with gastronomy customers of Resch&Frisch), as it allows cutting four, five, six, seven or even eight equal-length pieces from a cake. We produced more than 1,000 items of the cake spacer. 



TOURIST INFORMATION SIGNS

Weather-proof and stable

Signs are suitable for many purposes, from giving straightforward information to delivering complex advertising messages: tourist information signs offer orientation, information and advertising in one go. When placed outdoors, such signs may become quite weather-beaten.

Who hasn't encountered worn-out outdoors signs? In order to stay the wearing process it is important to choose the proper material. Staining, fading and discolouring need to be prevented for many years. It

is here that plastic-coated panels and laminated film-covered signs come into their own. The important thing is to embed the printed layer between two layers of either laminate or powder coating. Our past and present projects vividly demonstrate that design knows no boundaries. An unrestrained choice of shapes and colours, combined with weather-proofing, ensures the decisive advantage of our tourist information and advertising signs.

Home of the wine

Relaxed hiking or biking between the vineyard-covered hills and flat stretches and a rustic stop at one of the many Heurigen taverns are easy to combine in the Weinviertel, the northeastern quarter of Lower Austria. The requisite information is provided by 49 advertising panels recently installed at key locations and biker stops along the southern wine road, informing about wines, hosts and interesting facts about the region. The panels are sized 1600 x 1200 mm, made of aluminium sheeting and covered with film. The printing is protected by a laminate suitable for long-term outdoor use.



The tourist information panels made by Forster provide interesting information on the wine road in the south of the Weinviertel.



Aachen Urban Region: interactive adventure signs with numerous extras such as flaps, periscopes and turntables. (Planned and implemented by www.pronatour.at)



Interactive signs for adventure trails

The Aachen urban region had altogether seven adventure biking trails developed by Pronatour GmbH. They are routes individualised by specific regional focus themes. Along the trails, resting places feature panels full with interesting information. For these stops, Forster produced the signs and panels. The signs are coated with a high-quality film and the printing is protected by a laminate specially developed for outdoor use. The panels are covered with a plastic layer where the printing is protected by a transparent overcoat. A multitude of extras such as flaps, periscopes and turntables entice visitors to interactively use the signs. 📄



Forster know-how guarantees traffic safety on Austrian roads.

A23 VIENNA SOUTHEASTERN RINGROAD

Complete renewal of St. Marx elevated road

In March 2020, ASFINAG, the Austrian stock corporation responsible for motorways and highways, launched upon the full-scale reconstruction of the St. Marx elevated road. Almost three kilometres of the Vienna Southeastern Ringroad A23 were renewed from scratch. The requisite traffic engineering infrastructure and noise barriers were supplied by Forster.

The St. Marx elevated road, extending from the Absberg tunnel to the Prater interchange, was totally renewed. Everything from the load-bearing structure to the supports, drainage, lighting and, naturally, the road surface itself, was completely overhauled. The project included the ten exit and entry points which were brought up to the state of the art. The massive works extended to the traffic engineering facilities which had to be adjusted to the new situation.

Forster's scope of works Already in March 2020, Forster began to dismantle the overhead signs located in the section. Altogether nine gantries were removed, stored and reinstalled after adaptation, all in line with the overall work schedule. In addition, we supplied ten new gantries. We used our tried and tested approach to delivery: preliminary assembly was done on schedule at our works at Waidhofen/Ybbs, after which the gantries were transported to the site where another team had

already begun with the preliminary works to set up the gantries.

The installation itself once again provided proof of our competence. Almost all the dis- and reassembly could be done at night, between 10 pm and 5 am, in order to minimise traffic obstructions. This took about 40 night shifts. The well-coordinated and knowledgeable assembly teams agreed their schedules so well that closures of lanes could be kept extremely short.

Colour routing system during construction works Throughout the roadworks, up to 20 variations in vehicle routing were necessary. To ensure that motorists would keep track of their lane at all times, ASFINAG introduced a pilot colour routing system for the site signs.

Forster delivered the modular site signs for the pilot project. In this way, routing variations could be flexibly introduced and indicated as required. The site signs were fitted





Assembly work was carried out mostly at night.



Site signs offer a better overview at a glance.


to provisional supports and existing overhead signs.

Noise screens for 15,000 neighbours

Three colours guided motorists through the site until the end of 2022:


The colour blue: blue for the long-distance destinations towards Graz and Linz, north towards Prague, Brno and Budapest, and towards the centre and Erdberg.

The colour orange: orange pointing the way towards the Gürtel junction.

The colour turquoise: turquoise designating the St. Marx junction. 

For the thousands of neighbouring residents, new noise control structures were raised next to the carriageway. The barriers of up to 5,5 metres in height are highly noise-absorbent on one or both sides, at places supplemented by glass elements. For this project, the client opted for a dual design: noise screening elements as standard design facing the road and a version extending across the uprights at the residents-facing side.

During the two and a half years of construction, work to instal the noise barriers could – contrary to the work for traffic engineering facilities – be carried out during day hours.

The old noise control panels were used for provisional protection until completion of the new barrier, after which they were disposed of. 

FACTBOX:

The St. Marx elevated road runs from the Absberg tunnel to the Prater interchange. At a length of almost three kilometres it crosses three districts: the third, tenth and twelfth ones. The section includes 32 bridges, ten slip roads and two junctions: St. Marx and Gürtel. The greater part of the project was completed in November 2022. Incidental work that does not affect the main carriageway will continue until February 2023.



The colour nuances, at places with two-coloured slanted transition zones, provide for a nicely harmonious touch.

33RD AMENDMENT TO THE HIGHWAY CODE IN FORCE

New traffic signs as of 1 October 2022

The 33rd Amendment to the Highway Code entered into force on 1 October 2022. It is designed to promote “soft” mobility, fostering bicycle and pedestrian traffic and improving road safety of children and young people.

New traffic rules need new traffic signs and below-sign plates. Bicyclists are now permitted to turn left or right even when the traffic light is red, always providing that the requisite plate has been added below the sign. Find below a description of these new plates and all other new signs:



The first new traffic signs were installed in Innsbruck already in October.



Section 58/2c – marks a pedestrian and bicycle crossing

The sign shows the continuation of a footway and cycle track and a joint foot and cycle path for the purpose of crossing the lane (replaces two different traffic signs: Section 53/2c_a and Section 53/2c_b).



Section 53/11a – marks a dead-end street open to pedestrians at its dead end

Section 53/11b – marks a dead-end street open to cyclists and pedestrians at its dead end

The signs points out that the street is a dead-end one for motor vehicles but continues for pedestrians and cyclists (Section 53/11b).



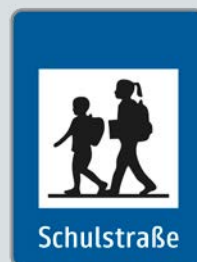
Section 53/6b – marks an electric charging point

The sign indicates an electric charging point. The distance can be specified in the blue margin.



Section 54/n – additional plates for cyclist traffic

A plate next to a red traffic light means that cyclists may turn to the left or, in the case of a T-crossing, go straight on as defined in Section 38/5a. In both cases, cyclists must first stop and make sure that they will not endanger anybody when continuing their ride.



Section 53/26a – marks a school street

The sign communicates the start of a street temporarily closed to individual traffic at the start and end of a school day for which the special provisions of Section 76d apply. The end of the school street is indicated by the sign of Section 53/29 (end of a school street).

All new traffic signs can be found in the price sheet of our web site for downloading and in our online shop. 📄

For further information on the 33rd Amendment to the Highway Code see: https://www.oesterreich.gv.at/Gesetzliche-Neuerungen/Bundesgesetzblatt/33_StVO_Novelle.html

LORRY ROUTING SYSTEM AT EGGER

On-site traffic efficiently regulated



Loading and unloading points are assigned different colours and are consecutively numbered.

Lorry traffic on the company's premises became increasingly dense and had to be reorganised. The new sign system made by Forster has ensured that the traffic flow is now efficiently regulated.

Annually, lorries, trains and ships transport about 1.5 million timber logs to the Egger factories in Austria. The greater part of the timber is carried by lorries, and a lorry routing system accordingly became necessary at the company's headquarters of St. Johann in Tirol.

Right from the first stage of the project finished in the autumn of 2022, some 20 signs have made sure that a smooth flow of lorries moves across the premises of Fritz Egger GmbH & Co. OG. The departments were divided into loading and unloading zones, colour-coded



and numbered to facilitate destination-finding for the lorries.

The locations of the signs were identified in the course of a walk-around with the client, which included decision-making on their attachment to façades, columns and poles and choosing and adapting suitable attachment systems to fit their underlying structures. The only new fitting necessary to hold signs was right at the entry point of the premises. 🏗️

Forster has the proper material for each type of attachment.

ST. JOHANN IN TIROL

Overhead signs renewed

In early 2022, Forster Verkehrs- und Werbetechnik GmbH installed three new overhead signs along the B178 near St. Johann in Tirol. They replaced models that had served for about 30 years and were due to be retired.

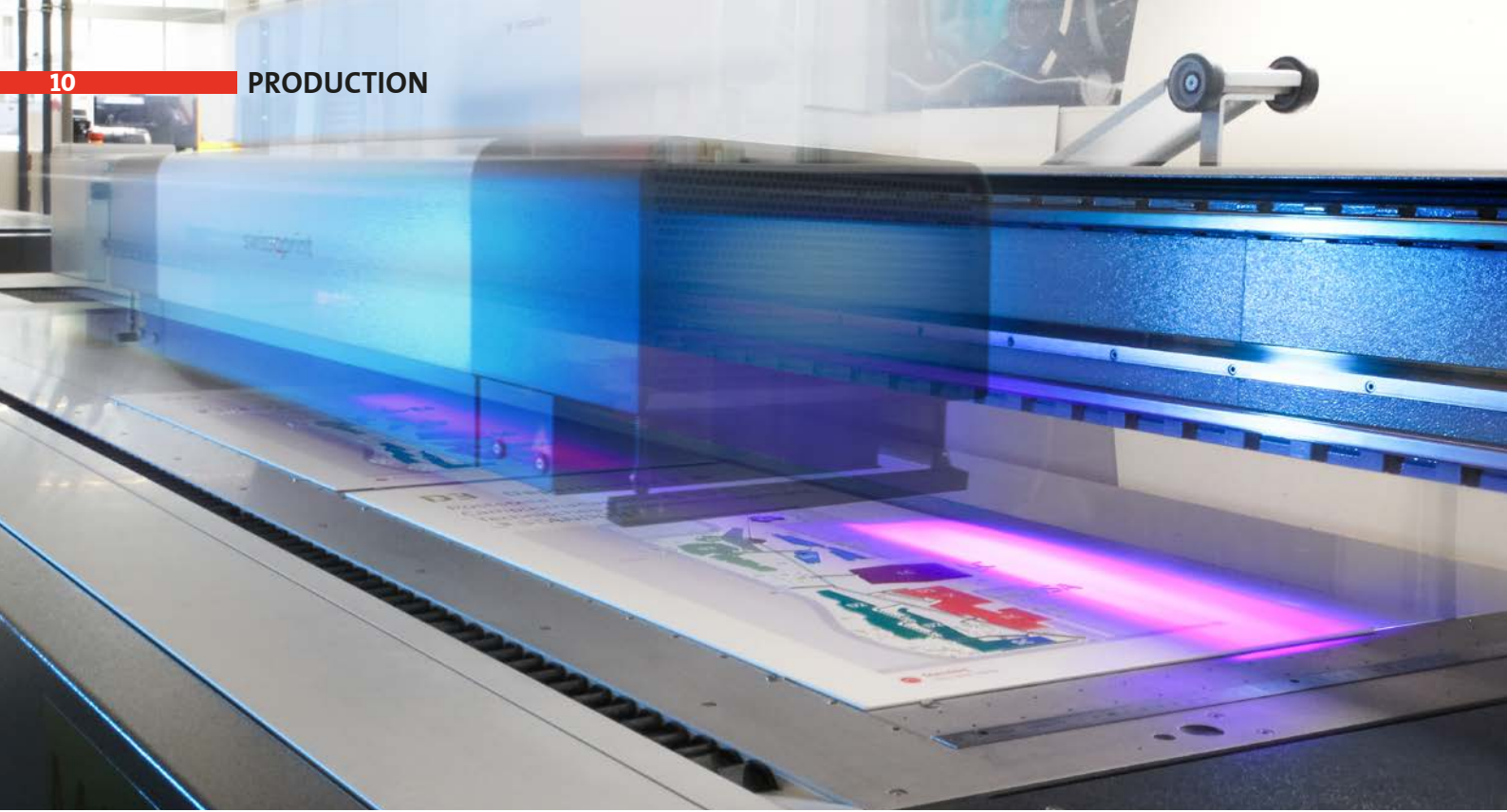
It was not just the support structure that had aged, but the inscriptions had changed as well. The typeface no longer complied with the stipulations of the current RVS Road Planning Guidelines and Regulations. Accordingly, the Tyrolean government extended its order from replacing the cantilevers to renewing the signs.

Client-provided works The client itself dismantled the gantries, built



the foundations and arranged for making the construction site safe for the assembly works. 🏗️

Forster's brief included the stress analysis for the steel structure and foundations.



TACTILE SIGNS MADE BY DIGITAL PRINTING

Barrier-free innovation

As an all-round supplier of routing and information systems, we naturally have barrier-free sign systems in our repertory. An innovative production solution for digital printing allows us to make tactile signs in normal or Braille letters.

In the public sphere in particular, information needs to be furnished in a way suitable for the visually challenged. The Federal Act Governing Equal Treatment for People with Disabilities (BGStG) stipulates

measures to ensure that people with disabilities have equal access to services.

Signs that can be felt Tactile signs can be made to feature normal or Braille letters. They are used on overview boards, monument signs, information signs and various types of direction signs. Layout plans may be similarly produced with raised letters.

Our innovative process involves raised letters placed on a choice

of carrier materials with different surfaces. To this end, metals, acrylic panels and rigid foam boards may be used, as well as plastic film.

By piling on several layers of ink, we get letters that are sufficiently raised to be felt. The words and signs produced in this way are, moreover, very durable because the ink of the top layer protects the layers underneath so that layers cannot be pulled off individually. Moreover, the letters have a pleasant feel because of their rounded edges.

Tactile signs in practice Elements with tactile normal or Braille lettering can be integrated in all our sign systems, from door signs to directional signs, facility signs and monument signs. In recent years, our products have been placed in many public buildings where they provide barrier-free orientation. An example would be the new building of the Vienna University of Economics and Business which was fitted with a tactile guidance system. Similarly, the Ilse Wallentin House of the Vienna University of Natural

Layout plans are available with raised or Braille letters.





Tactile lettering – information for all in raised or Braille letters that can be felt.

The letters feel particularly pleasant thanks to their rounded edges.




Resources and Life Sciences has door signs and overview panels that can be read with the tip of a finger because they feature Braille and tactile normal letters.

Barrier-free in public transport

This inclusive approach is similarly useful in public transport. Tactile signs help visually impaired and

blind people to safely move through the public space.

Currently we supply our client SIEMENS Mobility with tactile signs (pictograms) for trains. They are seat numbers made of aluminium and film, and stainless-steel icons (ordered by Evac) for the sanitary facilities in the trains. 



Markus Haas
 Managing director and vice-president of Freiraum-Europa
 Vice-president of EIDD – Design for all Europe

„Tactile signs are primarily targeted at visually impaired people and are thus designed to be felt. It is important to note that blind and visually impaired people need to become aware of such signs. They are useless when they cannot be found. In practice, this means that they need to be combined with tactile floor indications or placed where the target group expects them to be.”



Seat numbers for trains.

MAJOR PROJECT IN THE NETHERLANDS COMPLETED

Optimal noise screening for the HSL Zuid



Early December saw the completion of works to instal the improved noise screen along the HSL Zuid, a Dutch high-speed railway connecting Amsterdam with Paris. The result is optimal noise protection for the neighbours, who are now screened from the noise generated by the high speed of up to 330 km/hour.

Noise control measures along railway tracks are a sensitive issue for operators and neighbours alike. Although the noise generated by the trains of the high-speed line was within the legal limits, neighbours increasingly felt annoyed by the train service that had started in 2009. In order to further reduce the noise level, the Dutch Ministry for Infrastructure and Water Management (I&W) decided in 2015 to instal noise screening measures at several points along the HSL with a

The sophisticated combination of highly absorbent and transparent elements makes for superior noise protection and panorama views.



view to improving the situation for the line's neighbours.

Modernised, extended, raised ****

Most of the noise control measures were concentrated at Bergschenhoek in the municipality of Lansingerland to the north of Rotterdam, where the situation could be im-

proved along a section of more than four kilometres in length. Other communities such as Zoetermeer, Zwijndrecht and Mookhoek also found their noise barriers modernised, extended and, in part, raised.

Matching the existing structure ****

A special feature of the contract was



Apart from meeting stringent acoustic requirements, the elements need to withstand train velocities of up to 330 km/hour and the attendant slipstream effect.

that existing sound-reflecting elements were replaced by highly absorbent aluminium panels and new transparent elements for a stretch of ten kilometres. The new part thus had to fit into the existing steel supports. In order to achieve this, we developed special noise screening panels that emulated the design of the noise barrier and allowed the client to avoid additional high-cost construction works.

Three kilometres of new elements were added. The project involved more than 25,000 square metres of highly absorbent panels and about 15,000 square metres of transparent elements, an area that would cover about 5.6 soccer pitches.

Less noise and an unobstructed view of the Netherlands With the new structure using highly absorbent noise screening elements made of aluminium, the noise is absorbed rather than reflected, significantly reducing the sound level. To ensure that the train passengers profit as well as the track neighbours, the noise barrier incorporates so-called panorama windows. These are transparent noise screens fitted between the highly absorbent elements so that passengers can still view the scenery in spite of barrier heights of up to five metres.

The latest software in use Development took one year and was completed in December 2020. The work included analysing the noise screening elements down to the last detail with state-of-the-art software, and integrating the findings in the new design. In addition to the stringent requirements with regard to acoustic properties, it was necessary to take into account the Dutch standards when developing the elements. Thus it was important to ensure that the elements would withstand train velocities of up to 330 km/hour and the attendant slipstream effect. Already in March 2021 we were able to commence delivery of the serially produced elements. The project was finished in December 2022, with noise protection improved and the quality of living increased for the train line's neighbours. 📄

L76 ROCK SHED AT LANDECK CASTLE

Noise control above the Inn River

Over the past years, the L76 Landeck Highway was repeatedly affected by rockslides between its southern Landeck exit and Fließerau. Relief comes from a new rock shed, which provides protection for motorists across a length of 722 metres. Efficient noise protection comes from noise-absorbent panels made by Forster.



After a serious rock slide in early 2018, works were started for a rock shed to protect the road. The structure, known as Schlossgalerie, is open downhill and fitted between the mountain slope and the Inn River. It was opened in early October 2022.

You may know how it feels when you enter a tunnel whose faces reflect and intensify the noise emitted by the car. The phenomenon will be doubly unpleasant for neighbours and cyclists. Our sound-absorbing FONO-CON noise screening panels prevent the noise from being reflected, and even actively absorb it. As a result, the sound level in the rock shed is perfectly agreeable and neighbours are well cushioned. An attractive appearance is provided by the brightly grey- and anthracite-coated panels. 📄



Noise screening panels prevent reflections of the sound of passing cars.

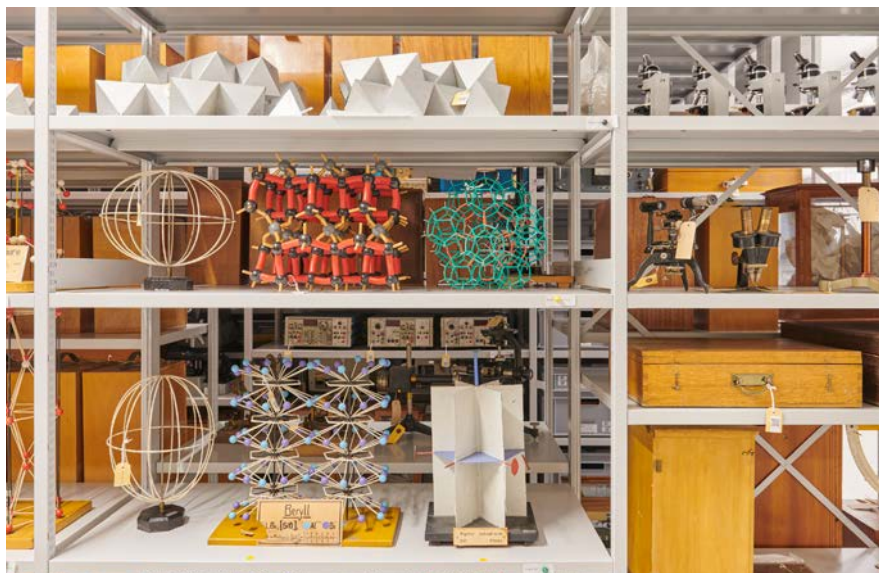
CENTRAL DEPOT AT BUCHS (ZEDEBU)

Storage for Zurich University

The full force of science is parked in the newly built central depot of Zurich University at Buchs which preserves the University's knowledge on archiving shelves made by Forster.

The new central depot at Buchs, which is also used for research purposes, aims to provide optimal long-term storage for its stock.

Suitable for all items from small to large The depot will gather objects taken from 60 local facilities run by a variety of disciplines such as zoology or botany, as well as items archived by ETH Zurich. To provide for optimal storage of the approximately 5 million items, it needs optimal room temperatures and humidity (the building itself is fitted with three different climate envelopes) as well as shelves adapted to the stored goods. The Buchs central depot run by Zurich University has opted for stationary shelving combined with cantile-



ver racks, pallet racks, wide-span shelves and racks raised by 150 mm in order to be directly accessible by a forklift, enabling heavy items to be lifted directly onto the rack.

Space economy The depot features mostly FOREG® 2000 shelving

which makes for an efficient use of the 8,000 square metres available for archiving. Mobile shelving after all doubles the space for storage. Its crank drive ensures that the racks can be easily moved even when they are heavily packed with items such as rock samples.



The cantilever racks hold aerfoil sections from the collection of ETH Zurich.

Large range of accessories

Targeted archiving at the depot is enhanced by shelves fitted with timber drawers (to hold rock samples), shelves with pull-out frames (such as bars to hold carpets) or mobile picture panels. Large and extra-large formats can be safely stored in FOREG® flat drawers that provide safekeeping for flat objects such as flags, carpets or textiles, as well as drawings and maps that need to be kept expertly and with due care. The storage rooms were intentionally built without windows to keep harmful sunrays away from the stored goods.

Sustainability in the long run

To obtain optimal long-term storage of items such as rock samples, large stuffed animals and medical equipment, Forster shelving systems guarantee a long service life.



They are made from high-quality galvanised materials covered with a powder coat (duplex coating), and components for future additions will be available in the long term, ensuring that the user can add to and extend the system at any time to meet the changing requirements of the central depot.

Competence and know-how

FOREG shelving systems have been available on the Swiss market for

more than 20 years. The know-how amassed by the staff operating within this network supplies the groundwork for innovative top-quality shelving. Our specialists work together with clients, users and architects to produce a customised solution for each and every project. Materials of superior quality and the latest manufacturing technologies warrant that our clients will enjoy smoothly functioning and easy-to-operate products. 🇨🇭



Large objects of the collection of scientific instruments and teaching aids are stored on pallet shelves that are accessible by forklift.



Rocks and fossils are kept in timber drawers.

NEW PSYCHIATRIC AND PSYCHOTHERAPEUTIC WARD AT KLAGENFURT UNIVERSITY HOSPITAL

Modern and clear signage for the university hospital



After three years of construction, the new building for the psychiatric and psychotherapeutic department at Klagenfurt University Hospital was opened in October 2022. The signage of the new building meets all that a modern psychiatric ward wants and needs. Let's take you on a tour of the building:

At the building's nodal points, adhesive lettering and profile-cut layout signs provide for prompt orientation.

By 2030, mental diseases such as depression will be among the most frequently occurring illnesses. A key milestone of patient nursing care is the newly built psychiatric ward in Klagenfurt. We furnished the modern and clear signs that help users find their way quickly and without any glitches. Thanks to its large range of both customised solutions and standard systems, Forster is frequently contracted as a provider of sign systems.

Welcome to all Various Combiflex CF60 monument signs welcome patients and visitors alike right at the entrance and help them find their way. The altogether five monument signs vary in height: one version is three metres tall and LED-backlit, a second one rises to 1.65 metres directly at the entrances, has recesses for card readers and an intercom

system. As a nice touch, the special design with an inside base makes for invisible attachment methods.

Internal routing system When entering the new building, the user is faced with routing system signs made of crystal-clear acrylic glass which were imprinted mirror-inverted from the back. The signs are distance-mounted with stainless steel spacers which give them a particularly harmonious touch. At the central nodal points, plotter-cut film glued directly to the wall and department signs made of profile-cut plastic make for prompt orientation.

Modern design To match the modern design of the building, the client opted for the Combiflex Plana series, a straight-lined and particularly flat system of door signs made of anodised aluminium sections. The





The modern design of the Combiflex Plana door signs perfectly reflect the style of the new building.

400 signs spread across the building have an added advantage in their optimal flexibility, as they can be labelled individually by paper inserts.

Barrier-free glass markings The glass markings on the inside doors comply with Austrian Standard

B1600 and are in part supplemented by adhesive letters added separately. In this way, the glass markings not only fulfil their foremost task of preventing accidents, but integrate the corporate design and indicate the separate departments. FF



LENZ, THE NEW LOCAL SUPPLIER AT GAFLENZ

Well-sorted and well-labelled

The LENZ is the new local store at Gafrenz, an innovative cooperative outlet that sells the everyday goods that are needed by local consumers. The signs were supplied by Forster.

“LENZ – for shopping, enjoying and leisure” is the message of the monument sign placed right in the entrance area that informs customers on what is on offer: a post office, a tobacconist and newspaper agent, and a local supermarket, with opening hours stated for each. The monument sign is the first representative of the new LENZ and an impressive eye-catcher, information point and advertising vehicle.

The information post charms by its slim and graceful design. The flat panels are coated in anthracite grey and digitally imprinted reflecting film to improve readability. The building's signage consists of individually laser-cut and powder-coat-

ed letters made of aluminium, positioned to “hover” by spacers that produce a shadowing effect. The signs match the building's architecture and are expected to have a long service life thanks to their top-quality make. FF



Building signs: we can do almost every shape and colour.

Combiflex CF 60 monument signs act as the highlight of the venue.

News from Forster Group staff

❖ VOCATIONAL TRAINING SCHOOLS

Laura Springer (metal engineering, with mechanical engineering as the main module) completed the third form with excellent success.

Matthias Huber (information technology) completed the second form with good success.

Tobias Leimlehner (printing, with screen-printing as the main module) completed the second form with excellent success.

Our congratulations on their excellent performance and our best wishes for their further career!

❖ ANNIVERSARIES

Waidhofen/Ybbs:

45 YEARS

Walter Schreil

35 YEARS

Günther Almer

Franz Aspalter

Robert Bladerer

Emil Breg

Josef Großauer

Michael Hubmann

Helmut Kloibhofer

Thomas Steinmetz

Hermann Teufl

30 YEARS

Heinrich Lumetsberger

Ingrid Lumetsberger

Helmut Maderthaler

Wolfgang Schuller

Christina Steinmetz

25 YEARS

Markus Fehringer

Dagmar Herold

Helmuth Mairhofer

Michael Mairoll

Mehmed Ramljak

Thomas Sommer

Franz Wagner

20 YEARS

Thomas Hintsteiner

Georg Höblinger

Christian Käferbäck

Christian Rehak

Thomas Stadler

Florian Stockner

Helmut Sonnleitner

15 YEARS

Sascha Bürbaumer

Pamela Forster

Dominik Rettensteiner

Jozef Teker

10 YEARS

Michael Bramreiter

Dominik Forster

Johann Graf

Alexandra Gruber

Margit Haselsteiner

Robert Hauß

Patrick Miedler

Erika Muck

Barbara Preiler

Martin Ritter

Manuel Röcklinger

Philipp Sützl

St. Peter/Au:

45 YEARS

Franz Kirchwegger

35 YEARS

Gerhard Kirschbichler

Margarita Maurerlehner

Alfred-Florian Schoberberger

Alois Wimmer

30 YEARS

Ücler Tokmak

25 YEARS

Nihad Delilovic

20 YEARS

Sandra Kaineder

Herbert Lettner

Patrik Reiter

Mario Strohmayer

15 YEARS

Astrid Gartlehner

Heinrich Kammerhofer

Thomas Prantner

Stelian Revnic

Adelheid Sindhuber

Elisabeth Wimmer

10 YEARS

Maria Bruckner

Baris Günes

Semsa Hodzic

Ihsan Inal

Eralld Zefi

Vienna:

30 YEARS

Thomas Zwettler

Colberg & Forster:

35 YEARS

Siegfried Colberg

10 YEARS

André Eichler

Kathrin Siebert

The management wants to express its gratitude and appreciation for their long years of loyalty to the company and looks forward to continuing our excellent teamwork.

Status as of 11/2022

A new phase in life ...

This year a large number of staff members commenced their active leisure phase or full retirement, after many years of working in the Forster Group.

RETIREMENT

Waidhofen/Ybbs:

Walter Streicher

St. Peter/Au:

Adolf Schäffer

PART-TIME SCHEME FOR OLDER WORKERS – LEISURE PHASE

Waidhofen/Ybbs:

Heinz Becksteiner

Hans-Peter Prüller

Gerlinde Michal

St. Peter/Au:

Maria Bürscher

Josef Hofschwaiger

Franz Kirchwegger

Josef Schoberberger

Engelbert Zisler



Waidhofen/Ybbs: (left to right) Hans-Peter Prüller, Walter Streicher, Gerlinde Michal, Heinz Becksteiner.



St. Peter/Au: (left to right) Josef Hofschwaiger, Josef Schoberberger, Maria Bürscher, Engelbert Zisler, Franz Kirchwegger.

The management wants to express its gratitude and appreciation for their long years of loyalty to the company and extends its best wishes for their new life phase!



Hans-Peter Prüller

After almost thirty years of working for Forster, Hans-Peter Prüller will commence his active leisure period at the end of this year. Retained by the company in 1993, as head of the export department, he successfully opened up new markets from the very start of his company life, furthering the company's export

ambitions. His brief grew inexorably, as did his activities at the locations of our international projects, so that he was quickly made an authorised signatory of the company. Under his management, the company's international scope

expanded continuously, to today's standing as the priority focus of the Forster Group.

The next step in his career was soon to follow: In 2003, Hans-Peter Prüller became managing director of Forster Verkehrs- und Werbetechnik. A thorough knowledge of the market, competence and strong personal commitment accompanied his career and work as a managing director. His expertise in sales and project business contributed substantially to the company's success. We wish our colleague all the best for his new life phase!

Forster Verkehrs- und Werbetechnik GmbH
Forster Metallbau Gesellschaft m. b. H.
Forster Industrietechnik GmbH
Weyrer Strasse 135
A-3340 Waidhofen/Ybbs
Telephone + 43 74 42/501-0
E-mail forster@forster.at
www.forster.at

